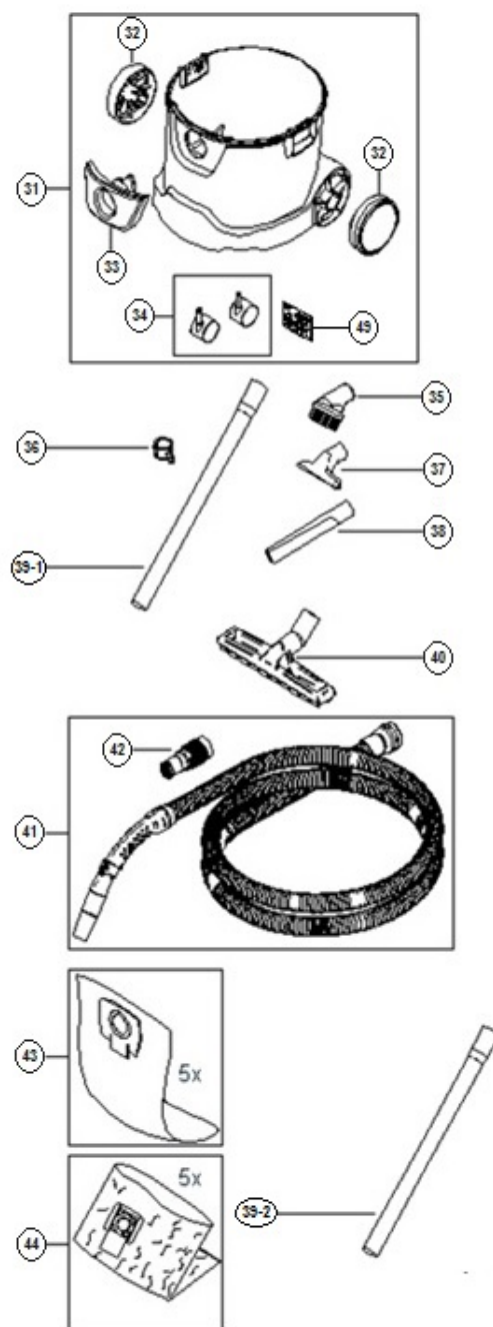
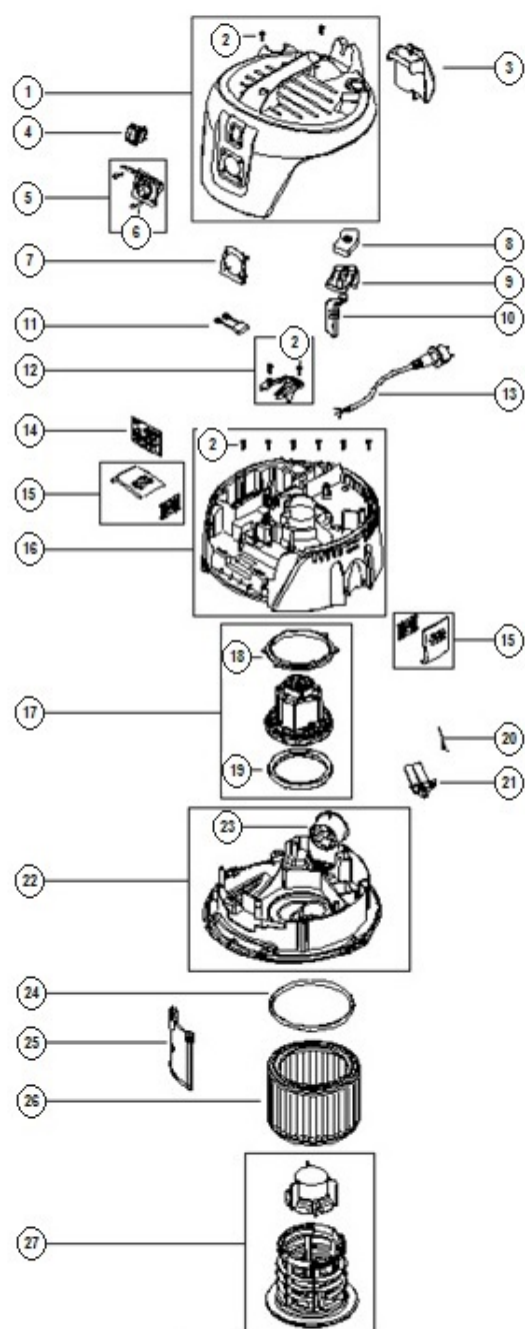


## ELECTRIC TOOLS PART LIST

**DUST EXTRACTOR**  
**Model RP250YDL**

2017.15.11



| ITEM NO. | CODE NO. | DESCRIPTION                      | NO.USED | REMARKS          |
|----------|----------|----------------------------------|---------|------------------|
| 1        | 372127   | HEAD COVER                       | 1       | INCLUD. 2        |
| 2        | 372128   | SCREW EJOT DELTA PT50X18WN1451   | 10      |                  |
| 3        | 372129   | HOSE/CABLE HOOK                  | 1       |                  |
| 4        | 372130   | SWITCH 1-0-TOOL                  | 1       |                  |
| 5        | 372131   | SOCKET 16A/250V EU               | 1       |                  |
| 6        | 372132   | SCREW EJOT DELTA PT35X18WN5451   | 1       |                  |
| 7        | 372133   | PLUG SOCKET PLATE                | 1       |                  |
| 8        | 372134   | PC-BUTTON                        | 1       |                  |
| 9        | 372135   | PC DRAIN HOUSING                 | 1       |                  |
| 10       | 372136   | PC ROD BASIC                     | 1       |                  |
| 11       | 372137   | ANTI-INTERFERENCE CAPACITOR SET  | 1       |                  |
| 12       | 372138   | CABLE OUTLET                     | 1       | INCLUD. 2        |
| 13       | 372139   | POWER CORD H05RR-F 3G1.5X8X2     | 1       |                  |
| 14       | 372140   | PCBA CHAMELEON 21 EA 230V        | 1       |                  |
| 15       | 372141   | CLAMP                            | 2       |                  |
| 16       | 372142   | CLAMPING PLATE                   | 1       | INCLUD. 2        |
| 17       | 372143   | MOTOR KIT 1000W 220-240V/50-60HZ | 1       | INCLUD. 18,19    |
| 18       | 372144   | UPPER MOTOR SEALING              | 1       |                  |
| 19       | 372145   | LOWER MOTOR SEALING              | 1       |                  |
| 20       | 372146   | TORSION SPRING D0.9X18X45 INOX   | 1       |                  |
| 21       | 372147   | PC FLAP-KIT                      | 1       |                  |
| 22       | 372148   | BASEPLATE WITH OUTLET            | 1       | INCLUD. 23       |
| 23       | 372149   | OUTLET                           | 1       |                  |
| 24       | 372150   | SEALING FILTER                   | 1       |                  |
| 25       | 372151   | DEFLECTOR SHIELD                 | 1       |                  |
| 26       | 372152   | FILTER ELEMENT D185X140          | 1       |                  |
| 27       | 372153   | FILTER SUPPORT CASE              | 1       |                  |
| 31       | 372155   | RP250YDL CONTAINER 25L ASS'Y     | 1       | INCLUD. 32-34,49 |
| 32       | 372159   | WHEEL D130                       | 2       |                  |
| 33       | 372157   | INLET FITTING                    | 1       |                  |
| 34       | 372160   | WHEELS LINK 50MM                 | 1       |                  |
| 35       | 372162   | SUCTION BRUSH D36 BLACK          | 1       |                  |
| 36       | 372163   | TUBE HOLDER KIT D36              | 1       |                  |
| 37       | 372164   | UNIVERSAL NOZZLE D36X115         | 1       |                  |
| 38       | 372161   | CREVICE NOZZLE D36X200           | 1       |                  |
| 39-1     | 372165   | EXTEN TUBE D35 2X505MM ST/CR     | 1       |                  |
| 39-2     | 372166   | EXTEN TUBE D36 2X500MM           | 1       |                  |
| 40       | 372167   | FLOOR NOZZLE D36 W/D KIT         | 1       |                  |
| 41       | 372168   | SUCTION HOSE SET D32X3500MM      | 1       | INCLUD. 42       |
| 42       | 372170   | TOOL ADAPTER                     | 1       |                  |
| 43       | 372171   | FILTER BAG HITACHI – SET 5       | 1       |                  |
| 44       | 372172   | DISPOSAL BAG HITACHI – SET 5     | 1       |                  |
| 49       | 372877   | LABEL DUST CLASS L               | 1       |                  |